



QUICK TIPS

FOR REGULATORS

When Verifying NSF Certification

IN THE ONSITE WASTEWATER INDUSTRY

Product certification plays an important role in ensuring onsite wastewater treatment units meet the requirements of the NSF/ANSI standards, are protective of public health, and comply with applicable regulations. Verifying NSF certification of these units takes four simple steps.


A certified product must meet all four criteria, or it is not considered certified.

1 PRODUCT MUST HAVE A VALID TEST REPORT.

A manufacturer must present an official NSF test report. This report shows if the product has met the pass/fail criteria of the NSF/ANSI standard(s) it was tested to.

Always confirm the manufacturer’s name, address, product name and applicable standards match the information you expect to see.

Note: A test report does not necessarily mean the product evaluated is third-party certified. In other words, testing and certification are not synonymous. Manufacturers may choose to test their product, but not pursue an official certification (which requires additional technical review).



NSF International
789 N. Dixboro Rd. Ann Arbor, MI 48015, USA
1-800.NSF.MARK | +1-734.769.8010 | www.nsf.org

TEST REPORT

Send To: Corporate #
Ms. Jane Doe
ABC Company
1234 Main Street
Any Town, My State 12345

Facility: Facility#
ABC Company Plant
1234 Main Street
Any Town, My State 12345

Result: PASS

Report Date: 10/10/2019

Customer Name: ABC Company
Description: Excellent Product
Tested To: NSF Standard
Test Type: Public Health Assessment
Job Number: 105243
Project Number: Project# 123456 (CL01, TE01)
Project Manager: Mr. Outstanding Service

Executive Summary: The product "Excellent Product" was evaluated under NSF Standard against the Public Health Assessment sections and was found to meet all requirements in accordance with said standard.

Thank you for having your product tested by NSF International.
Please contact your Project Manager if you have any questions or concerns pertaining to this report.

Report Authorization: _____
John Doe, Sr. Director of Laboratories

1924555123335654

Job#105243

Page 1 of 10

This report shall not be reproduced, except in its entirety, without the written approval of NSF. This report does not represent NSF Certification or authorization to use the NSF Mark. Authorization to use the NSF Mark is limited to products appearing in the Company's Official NSF Listing (www.nsf.org). The results relate only to those items tested, in the condition received at the laboratory.

Example of an NSF International test report.

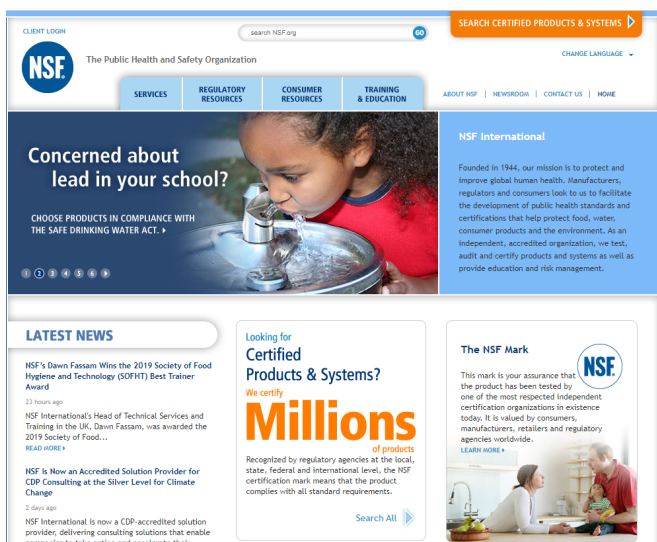
2

PRODUCT MUST APPEAR IN NSF'S OFFICIAL ONLINE LISTINGS.

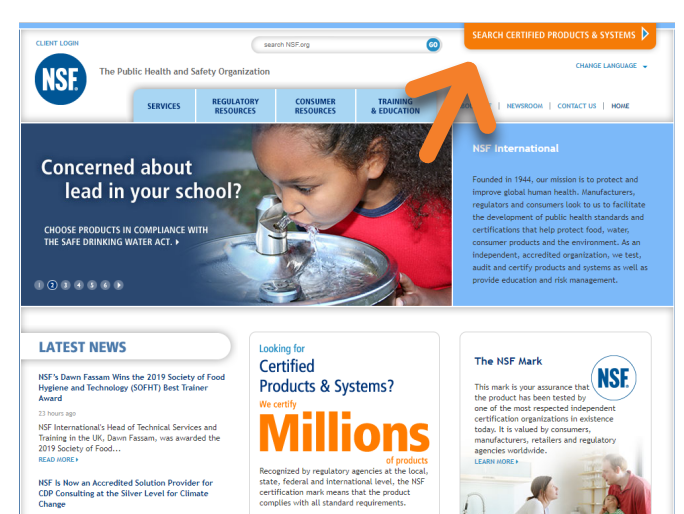
Always verify a product is certified by checking NSF's online listings. This ensures the product's certification is valid and was not dropped or halted for any reason. Only models and configurations that appear in the listings are certified.

NSF International's onsite wastewater certification listings can be found at <http://info.nsf.org/Certified/Wastewater/> or by following the steps shown below.

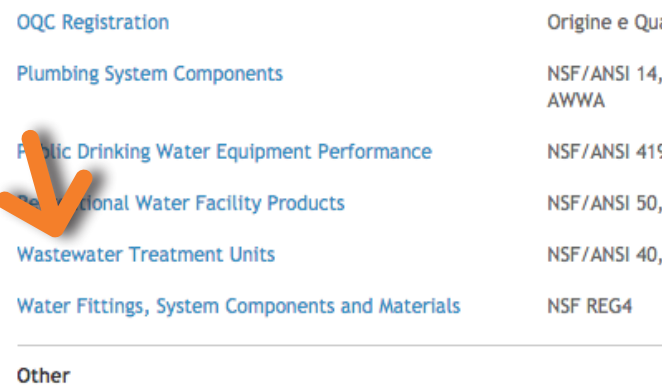
1 Visit www.nsf.org



2 Click the orange button titled "Search Certified Products & Systems."



3 Scroll down to the section titled "Wastewater Treatment Units."



4 Search by trade name, product standard or manufacturer name, or view the complete wastewater treatment unit listings.

3 PRODUCT MUST BEAR THE APPROPRIATE NSF CERTIFICATION MARK(S).

An onsite wastewater product certified by NSF International must always bear the NSF certification mark(s) applicable to that product. **If the product does not bear the NSF mark, it does not meet the requirements for certification and is not considered certified.**

NSF certification policies require the certification mark to be used on the unit to display full compliance – when the NSF mark is not displayed on the product, the certification is null and void.



This illustrates one example of how an NSF certification mark could appear on a product.

4 MANUFACTURER MUST INCLUDE AND EXECUTE A TWO-YEAR SERVICE POLICY (NOT OPTIONAL).

Manufacturers must include a two-year service policy in the cost of the original system. The policy must contain a minimum of four inspections, scheduled every six months over the two-year period. During these service visits the electrical, mechanical and other applicable components should be inspected, adjusted and serviced.

This service policy is often referred to as “operation and maintenance” or “O&M” and is a mandatory requirement per the NSF certification policies.

VALID CERTIFICATION CHECKLIST



Does the product have a legitimate test report?

Does the product have an official listing on NSF’s website?

Does the product bear the appropriate certification mark(s)?

Has the manufacturer adequately performed the two-year service agreement/O&M?

Still not sure?

CONTACT US at regulatory@nsf.org

to confirm whether a product is certified or for other questions on this topic.

