

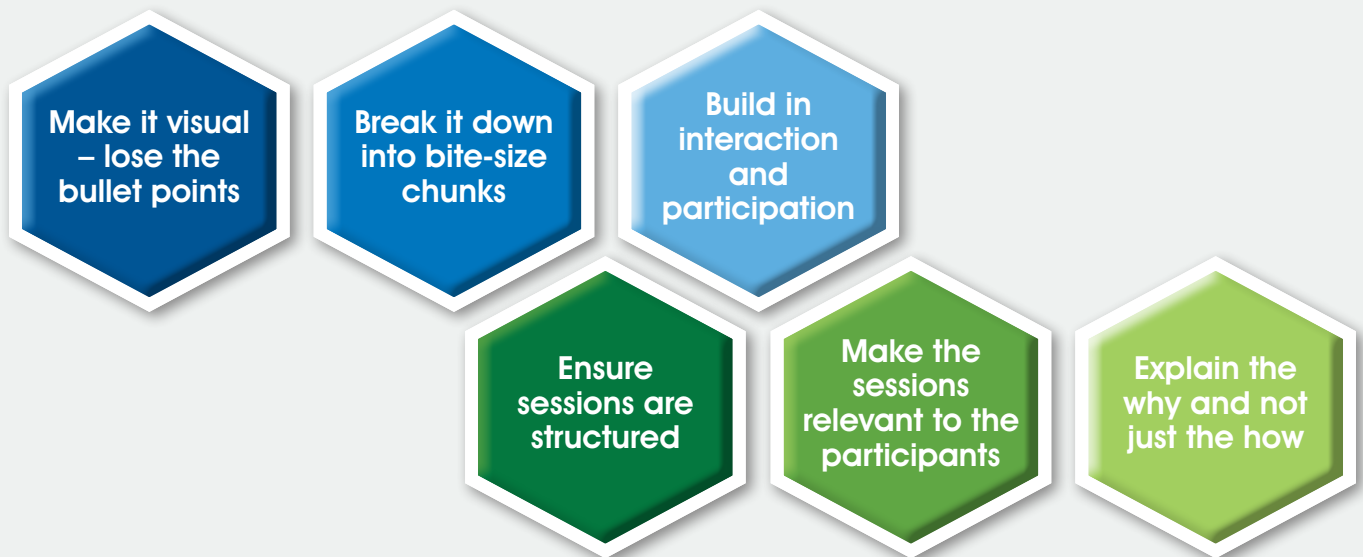


BLENDED LEARNING

At a time when more of us are working remotely it could be easy to lose sight of your own and your team's professional development. One way of providing an interactive yet remote method of learning is through blended learning: an approach to education that combines online educational materials and opportunities for interaction online with traditional place-based classroom methods.

But what does a successful blended learning course look like?

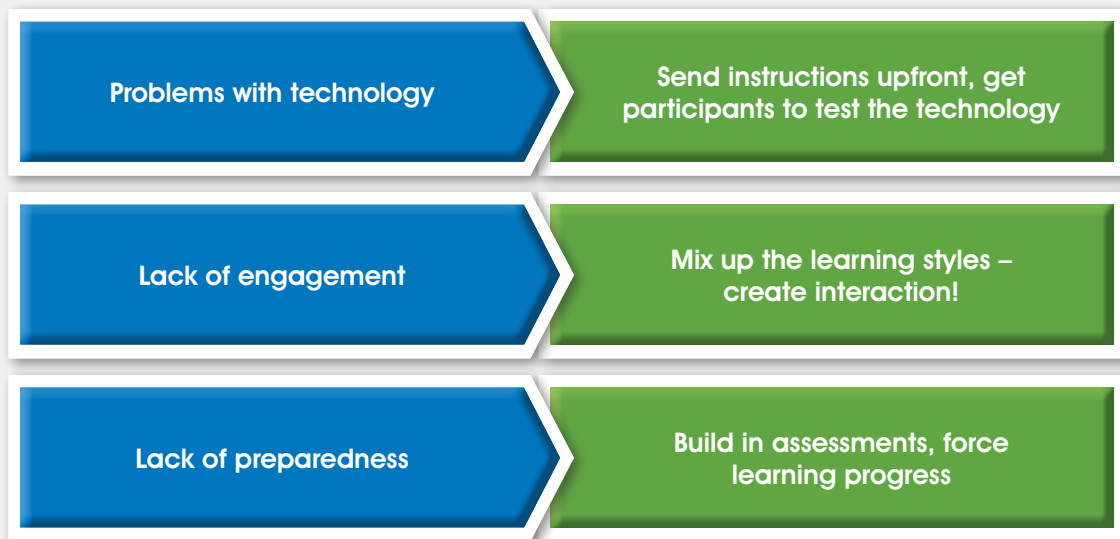
Incorporates all of the successful methods employed in a face-to-face session:



Contains the building blocks of the blended learning experience:



What can be the pitfalls of blended learning and how can these be overcome?



Virtual training is an offering that NSF are providing – many of our courses have already been converted into blended learning experiences: QP modules covering IMP, maths and stats, API and the PQS, and many more to come.

We also have a breadth of resources on our web page: www.nsf.org/info/pharma-training that may be of use when building your own blended learning experience. Look out for the next eLearning module to be released “Auditing with a data integrity bias – auditing data governance, paper records and electronic systems”.

All resources can also be found via our app.

Over the next six to 12 weeks, we will be releasing weekly resources tailored to help you work more effectively when remote and provide crisis management tools. The next release will cover how you can turbocharge your inductions and on-the-job training.

NSF INTERNATIONAL

789 N. Dixboro Road, Ann Arbor, MI 48105, USA | T +1 (202) 822 1850

The Georgian House, 22/24 West End, Kirkbymoorside, York, UK YO62 6AF | T +44 (0) 1751 432 999

Beim Strohhaus 17, 20097 Hamburg | T +49 40 66 87 88 -100

E pharmamail@nsf.org | www.nsfpharma.org | Follow us on [LinkedIn](#) [Twitter](#) [YouTube](#)