

# CDP CONSULTING SERVICES APPROACH YOUR 2020 DISCLOSURE WITH CONFIDENCE



Is your company one of the 7000+ disclosing through CDP?  
Do you want to add efficiency and reduce stress for your CDP reporting cycle?

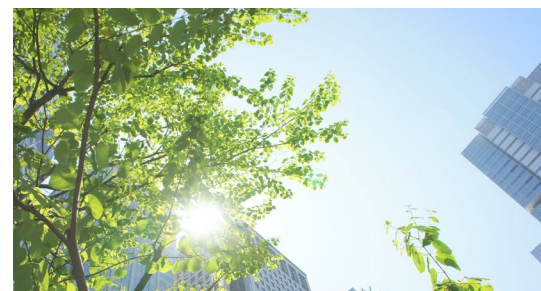
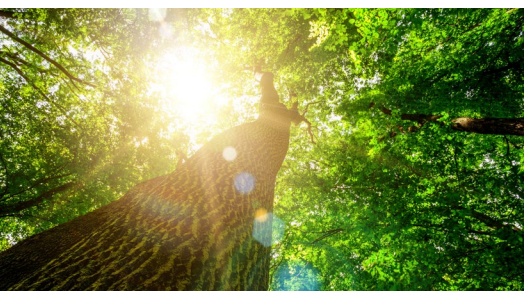
CDP operates a global disclosure system for investors, companies, cities, states and regions to manage their environmental impacts, allowing purchasers and investors to integrate the environmental information into their financial and purchasing decisions.

**As a CDP-Accredited Solution Provider, NSF has the expertise to optimize your CDP disclosure.**

By completing CDP's questionnaires on climate change, forests and water security, you can identify ways to manage environmental risks and opportunities. Investors and purchasers use CDP to make informed decisions, with 125 major purchasers representing combined purchasing power of over \$3 trillion request information on climate change, water or forests.

## OUR SERVICES

- > **CDP Workshop:** Attend an onsite or web-based training to get your team up to speed on best practices for preparing your CDP submission. Ideal for those who are going to be putting your organizations' CDP disclosure together.
- > **CDP Score Assessment:** NSF reviews your disclosure (either previous year or current year) and provides feedback as to what your organization can do organizationally to optimize your submission.
- > **CDP Disclosure Development:** NSF works with your organization to develop the full disclosures needed for CDP.
- > **Customized Training Options:** Need to train your organization? Contact us about customized options.



## COMPANIES THAT REPORT TO CDP FOR...



- > Are transparent about their carbon risks and see a positive impact on their valuation.
- > Are ensuring their strategies are in line with purchasing initiatives such as Walmart's Project Gigaton.



- > Demonstrate their commitment to improving water security to investors and customers.
- > Gain an enhanced understanding of water risks and how to respond.



- > Are reducing the risks associated with deforestation. 75% of companies say deforestation is a risk to their supply chains.
- > Report on the four commodities responsible for most deforestation: timber, palm oil, cattle and soy.

NSF's sustainability professionals can help you at any stage of the reporting process, whether you are planning to disclose for the first time or are looking to enhance and verify your existing report.

For more information, contact [sustainability@nsf.org](mailto:sustainability@nsf.org).

### NSF INTERNATIONAL

789 N. Dixboro Road, Ann Arbor, MI 48105 USA | [www.nsf.org](http://www.nsf.org)